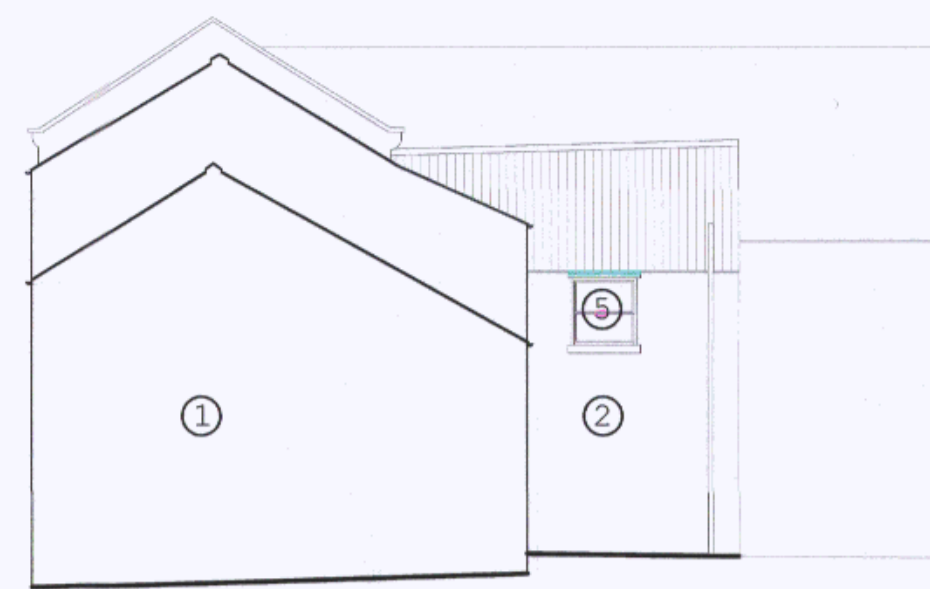
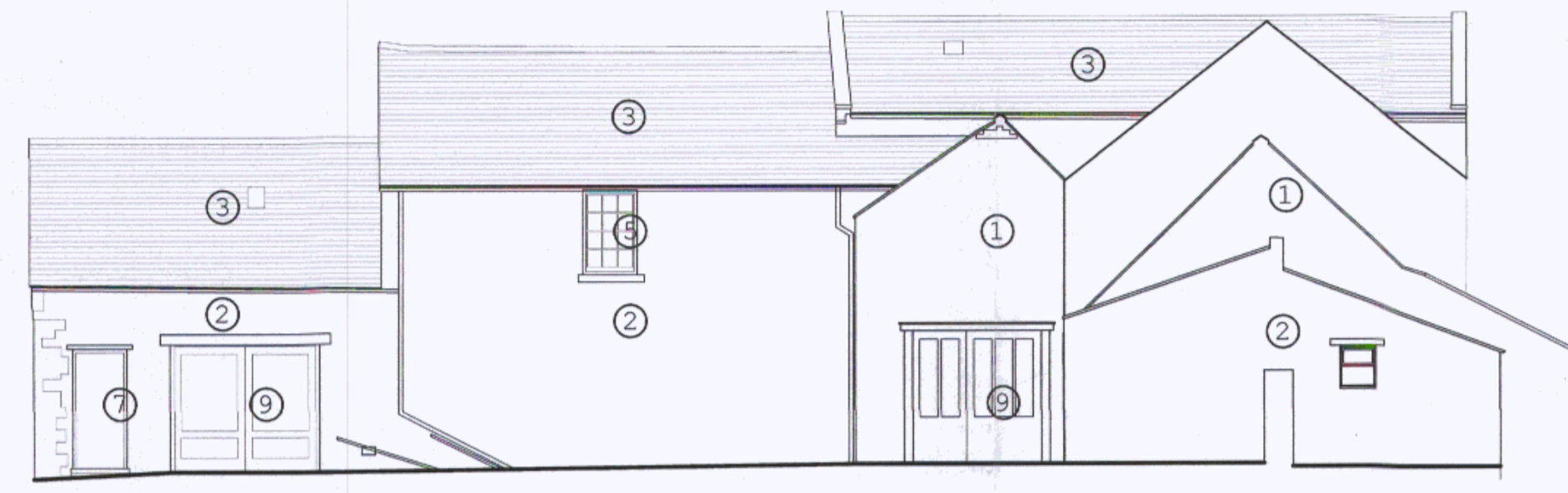




Elevation 1



Elevation 2

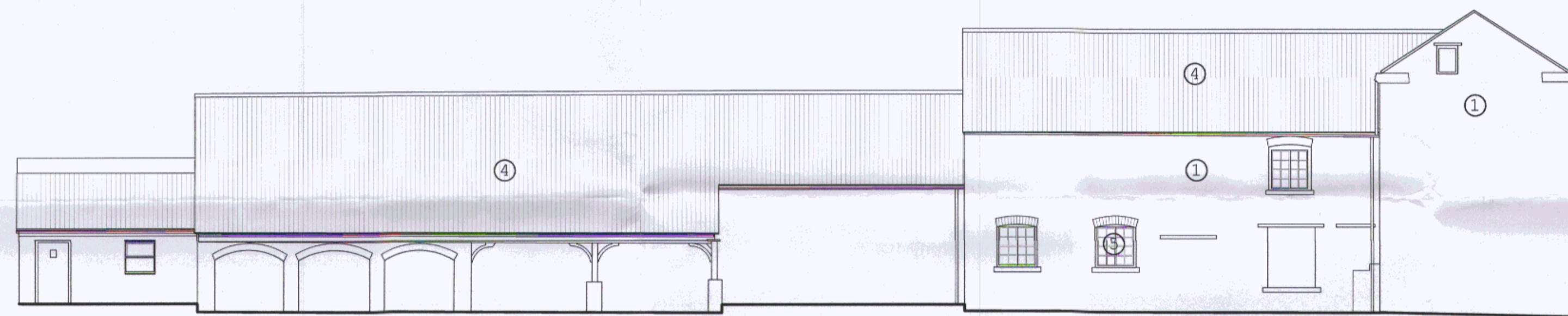


Elevation 3

- NOTES
- Materials-
- ① Stone
  - ② Brickwork
  - ③ Slates
  - ④ Pantiles
  - ⑤ Timber Framed Windows
  - ⑥ Galvanised Roller Shutter
  - ⑦ Timber Door
  - ⑧ Steel Sheet Roof Covering
  - ⑨ Glazed Timber Door



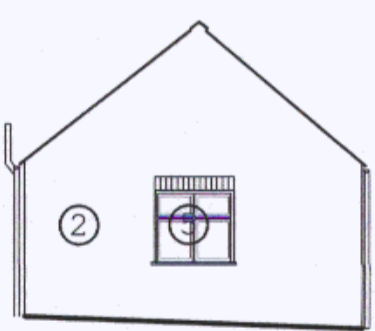
Elevation 4



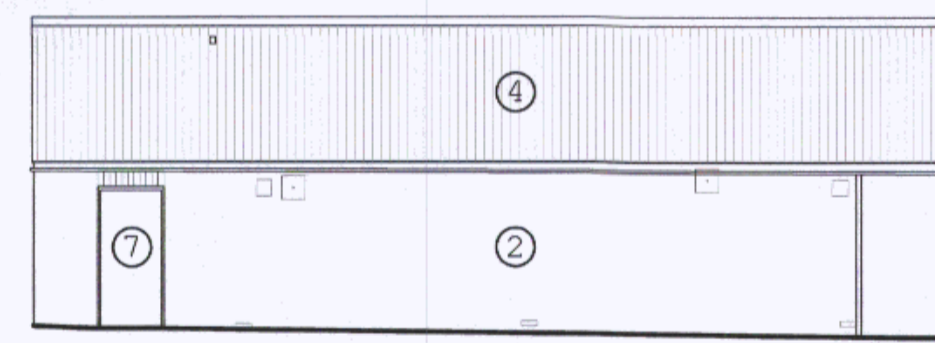
Elevation 5



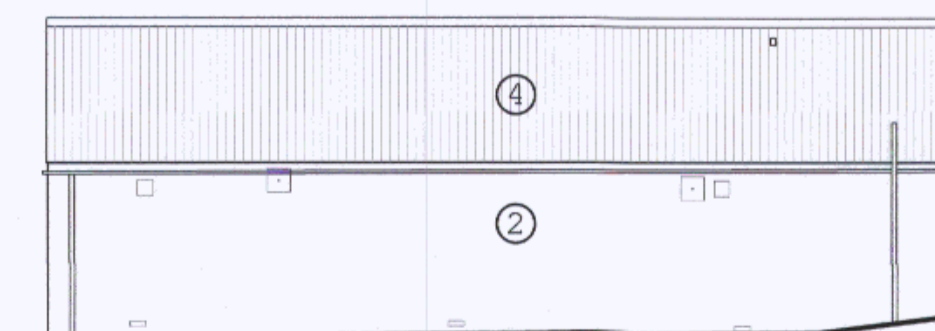
Elevation 6



Elevation 8

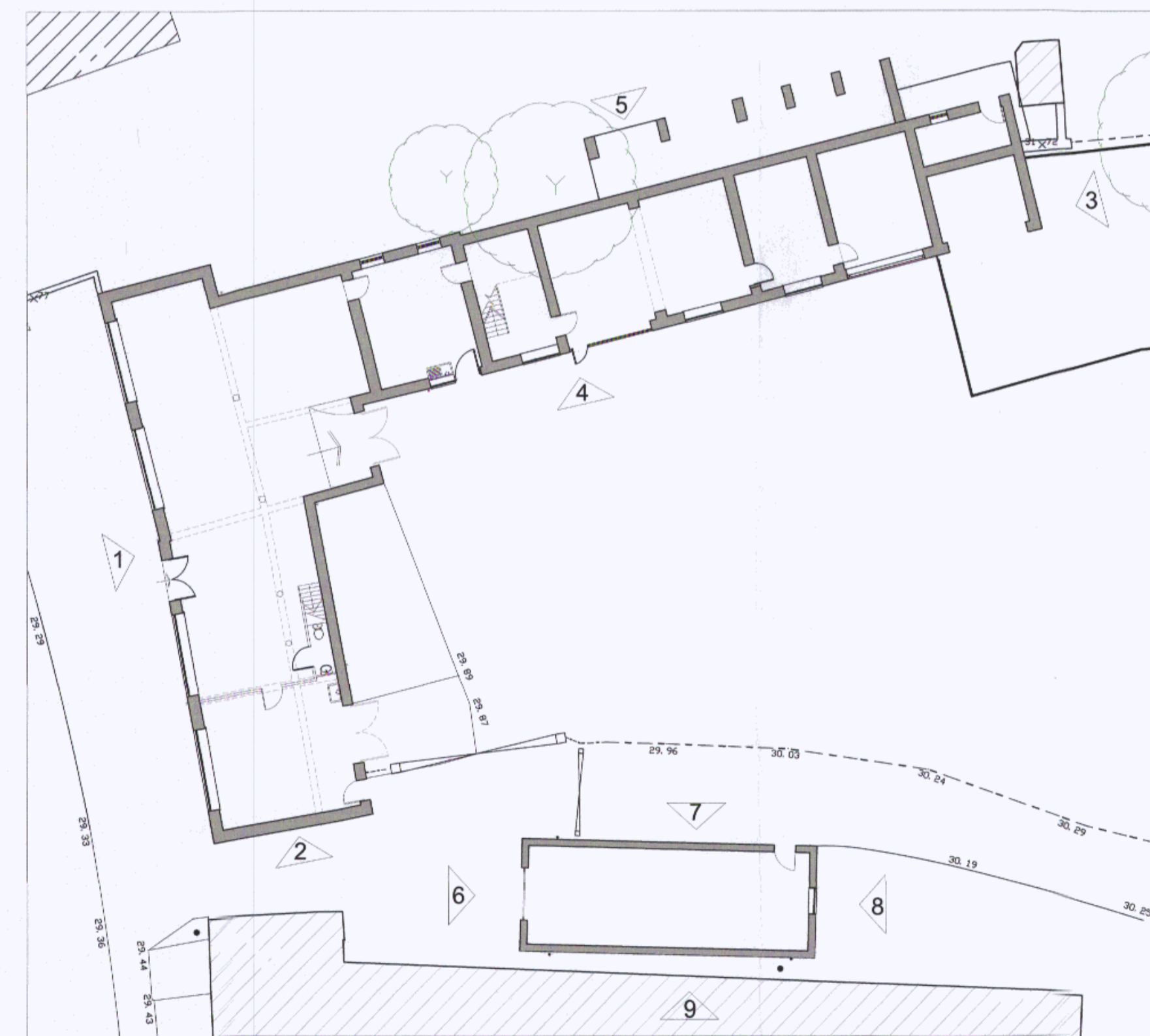


Elevation 7



Elevation 9

THIS COPY HAS BEEN MADE BY OR WITH THE AUTHORITY OF RYedale DISTRICT COUNCIL PURSUANT TO SECTION 107 OF THE COPYRIGHT, DESIGN AND PATENTS ACT 1988 UNLESS THIS ACT PROVIDES A SPECIFIC EXCEPTION TO THIS ACT. THE COPY MUST NOT BE COPIED WITHOUT THE PRIOR PERMISSION OF THE COPYRIGHT OWNER.



KEY PLAN Scale 1:200

rev	description	date	by	app by
original		29/05/14	JB	
<b>Planning</b>				
 <b>DSP</b> architects				
DSP Architects LLP DSP House 2 Kettlestring Lane York YO30 4XP United Kingdom Tel: +44(0)1904 479170 Fax: +44(0)1904 691235 E-mail: info@dsparchitects.co.uk Website: www.dsparchitects.co.uk				
<b>Slingsby Development LLP</b>				
Colenso House, Omega 1, Monks Cross Drive, Monks Cross, York.				
<b>Former Car Garage</b> Railway Street Slingsby				
<b>Restoration to reform 2 new dwellings</b> Existing Elevations				
scale @ A1	project No	drawing No	rev	
1:100	4008	(05) 12	-	

This drawing is to read in conjunction with all related drawings. Do not scale from this drawing. All dimensions must be checked and verified on site before commencing any work or producing other drawings. The originator should be notified immediately of any discrepancy. DSP Architects LLP & logo are a Trademark registered in Great Britain and Northern Ireland. © DSP ARCHITECTS LLP 2014